

# Waterford Fair

AN AUTUMN CELEBRATION OF AMERICANA

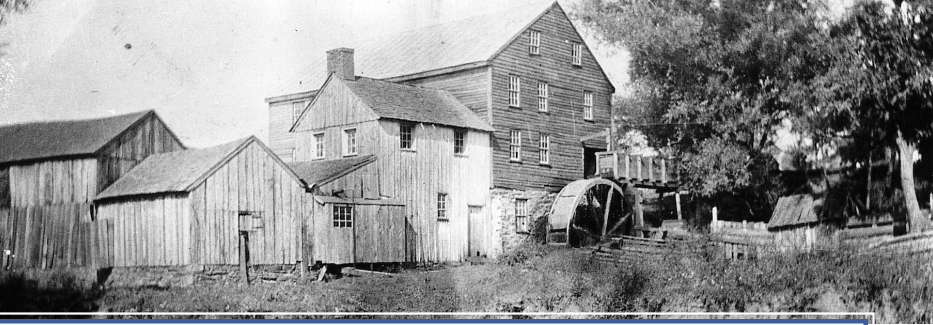
*FINE CRAFTS & HISTORIC HOMES TOUR*



CELEBRATING EIGHTY YEARS!

Waterford, Virginia  
October 4, 5, & 6, 2024 | [waterfordfairva.org](http://waterfordfairva.org)





## A Brief History of Waterford

Waterford was settled in 1733 by Amos Janney, a Quaker from Bucks County, Pennsylvania. Janney was soon followed by others and Waterford became the thriving center of a community of small farms. Because the Quakers were grain farmers, a grist mill was very important to them, and the first settlement included a mill near the site of the present structure with a few houses clustered nearby. The settlement that would become Waterford grew around Janney's Mill. From the 1760s onward, Presbyterians, Methodists and Baptists would also establish a presence here.

A few residents took part in the Revolutionary War; surprisingly, not all Quakers who saw service contrary to the Quaker principles on nonviolence were read out of Meeting. After the Revolution, Waterford grew rapidly with a wide variety of businesses, and by the 1830s, Joseph Martin's Gazetteer wrote:

*"Waterford contains 70 dwelling houses, 2 houses of public worship, 1 free for all denominations, the other a Friends' meeting house, 6 mercantile stores, 2 free schools, 4 taverns, a manufacturing flour mill, and 1 saw, grist and plaister mill, and (in the vicinity) 2 small cotton manufactories. The mechanics are 1 tanner, 2 house joiners, 2 cabinet makers, 1 chair maker and painter, 1 boot and shoe manufacturer, 2 hatters, 1 tailor, &c. Population about 400 persons, of whom 2 are regular physicians."*

Villagers even produced Shakespeare plays for local audiences.

The Quakers were joined by Scotch-Irish craftsmen from Pennsylvania who were responsible for much of the construction of the village.

While some early residents were slaveholders, the fact that Waterford had

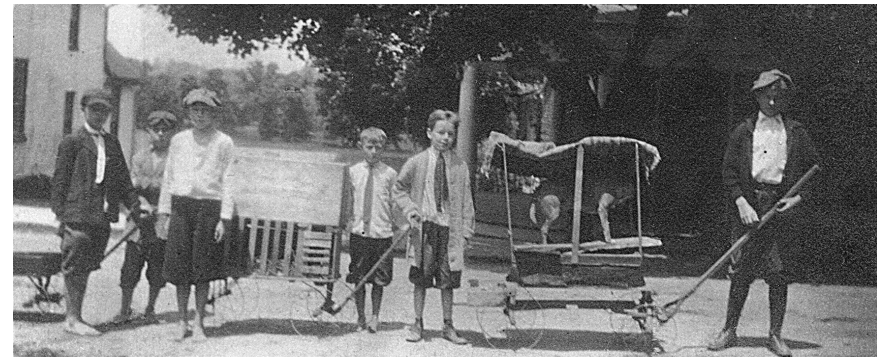
*Photo, top: Schooley Mill from Janney Street. Converted to a barn in 1927.*

a thriving antebellum free Black community was unusual for pre-Civil War Virginia. Waterford's Quaker roots and the abolitionist sentiments of most Quakers may have encouraged Black settlement here.

By the time of the Civil War, most Waterfordians strongly opposed secession, a stand extremely unpopular among the majority in Loudoun County. For most of the war, the Waterford area was a no-man's land that neither Federals nor Confederates were able to control for long. As a result of Confederate harassment, miller Samuel Means formed the Independent Loudoun Rangers, the only organized cavalry troop in Virginia to fight for the Union.

In 1871, the railroad was extended from Leesburg to Clarke's Gap (where Routes 7 and 9 meet) thus bypassing Waterford. The philosophical isolation so obvious during the war was succeeded by a geographic isolation as commercial centers easily reached by rail took business away from Waterford. By the time of the Depression, many of the buildings had deteriorated badly. In the 1930s, brothers Edward and Leroy Chamberlin, descendants of several old Waterford families, began to restore buildings in town and, in 1943, the Waterford Foundation was formed. This provided an impetus for residents, old and new, to work to preserve the village.

Today, Waterford's buildings and rolling fields look much as they did 200 years ago. The village is a Loudoun County Historic and Cultural Conservation District. In 1970, the entire village with the farmland surrounding it was designated a National Historic Landmark.



Pet parade on Second Street  
Edward Bruce Myers, Jr., at right  
(Photo courtesy of Doris E. Myers &  
Janet L. Myers Jewell, 2003)

# SECOND STREET SCHOOL

## OPEN ALL THREE DAYS

Special Presentation  
Friday 10am – 12pm

The one-room school on Second Street was built in 1867 to serve as a school and church for Waterford's African-American community. It is the second oldest one-room schoolhouse in Loudoun County.

Experience a typical day at school in the 19th century.

Program Participants: The Waterford Elementary School 5th Grade Class.



## Best Demonstrating Artisan of 2023 Amy & Joe Witmer

Amy and Joe are passionate artisans dedicated to preserving and creating Colonial, Traditional, and Historic items by hand. They specialize in crafting solid beeswax heirloom collectible figures and ornaments using traditional German techniques of molding and carving beeswax, a skill dating back to the early 1500s. They support local apiaries and manage their own honeybee hives to ensure they use the highest quality beeswax.

Each piece they create is unique due to the natural variations in beeswax. The Witmer's meticulously crafted works are cherished in private collections worldwide, and they take great pride in their detailed, handcrafted pieces that merge history with craftsmanship.

Stop by their tent, just outside the Old School, to learn more about their work and art.



# HOMES & GARDENS ON TOUR

*THE WATERFORD FOUNDATION wishes to thank the village residents who open their doors and share the history of their unique homes with visitors.*

## Tour Locations

### Friday

Loudoun Mutual Insurance | 15609 High Street | B  
Ephraim Schooley Home & Garden | 15547 Second Street | E  
Janney-Means House | 40128 Bond Street | J

### Saturday

Charles & George Schooley House, 40210 Main Street | L  
Isaac Hough House | 40205 Main Street | K  
Griffith-Gover House & Garden | 40139 Main Street | H  
Hollingsworth-Lee House & Garden | 40135 Main Street | I

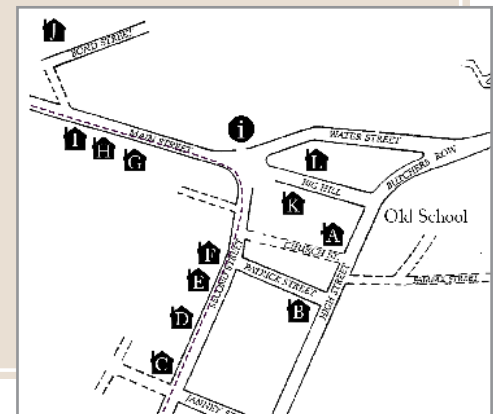
### Sunday

Janney-Means House | 40128 Bond Street | J  
Bank House | 40149 Main Street | G  
Samuel Hough House | 15527 Second Street | F  
Asbury Johnson House & Garden | 15567 Second Street | D

### All Three Days

Catoctin Presbyterian Church | 15565 High Street | A  
Second Street School | 15611 Second Street | C

Scan the QR code with your phone for descriptions!





## DEMONSTRATING ARTISANS BY MEDIUM

### Clay

- Eugene, Rosa & Winton | Old School (inside)
- Kennedy, Selinda | JW Church (lower level)
- Kessler, Jonathan | Old School (outside)
- Kirk, Roger | Bond Street Barn Area
- Linthicum, Lori | Old School (inside)
- Mills, Maureen & Zoldak, Steven | Old School (inside)
- Oliver, Amy | Old School (inside)
- Piazza, Anne | Old School (outside)
- Savely, Clay | JW Churchyard
- Steinhagen, Erich & Janice | Old School (outside)
- Supraner, Vicki & Scott | Bond Street Barn Area

### Fiber/Textiles

- Dansereau, Mallory | Old School (outside)
- Giles, Harriet | Bond Street Barn Area
- Hall, Marian | Old School (outside)
- Hazelton, Carolyn | Old School (outside)
- Lavorgne, Maureen | Bond Street Barn (upper level)
- Lindamood, Lodema "Beth" | Bond Street Barn Area
- Mihills, Cheryl | Old School (inside)
- O'Donal, Elaine | Old School (porch)
- Proctor, Jeanne | Bond Street Barn Area
- Ratcliffe, Kathie | Old School (inside)
- Robinson, Gary | Old School (outside)
- Waterford Quilters Guild | Old School (porch)
- Withnell, Susan | Old School (outside)
- Wychock, Karen | JW Churchyard

### Furniture

- Armistead, Jeff | Village Center
- Kauffman, Justin | Old School (inside)
- Stanik, Alex | Bond Street Barn Area
- Stanik, Ruth & Mike | Bond Street Barn Area

### Glass

- Aylward, Michael | Old School Inside

### Heritage Foodways

- Anderson, Maureen | Village Center
- Botchlet, Heather | Old School (outside)

### Jewelry

- Cantilo, Icka | JW Churchyard
- Hollenbaugh, Kelly & Gary | Bond Street Barn Area

### Jewelry

- Jobe, Jeffrey | Old School (outside)
- Niskala, Nurit | Next to Old Mill
- The Ray Family | Old School (outside)
- Stribling, Candace | Old School (inside)
- Van Hart, Linda | Old School (outside)
- Yang, Mary ZC | Old School (outside)

### Leather

- Pittman, Jessica | Old School (outside)

### Metal

- Hart, Ian | Old School (outside)
- Lanham, Jared | Bond Street Barn Area
- Pittman, Ben | Old School (outside)

### Mixed Media

- Banker, Ellen | Old School (inside)
- Bognar, Carole & Tom | Bond Street Barn Area
- Darr, Richard | Bond Street Barn Area
- De May, Robert | Old School (outside)
- Durnell, Andrea | JW Church (lower level)
- Gladfelter, Kimberly & Robert | Old School (outside)
- Helberg, Kristin | Old School (inside)
- Hicks, Connie | Old School (outside)
- Hollick, Michele | Old School (inside)
- Jeffords, Barbara | Old School (inside)
- Kriebel, Donna | Old School (inside)
- Mckellar, Judith | Old School (outside)
- Miller, Shelley | Old School (outside)
- Rochford, Grace | Old School (outside)
- Witmer, Amy & Joseph | Old School (outside)
- Wolf, Susan | JW Churchyard

### Paper

- Grabman, Marie-Helene | Old School (inside)
- Shriver, Alison | Old School (inside)
- Smith, Andy | Old School (outside)
- Spangler, Donna | JW Churchyard (lower level)

### Wood

- Alexander, Drew, Shea & Josiah | Old School (outside)
- Carson, Joe | Old School (outside)
- Dabbs, Laurel | Village Center (old jail)
- Dewitt, Robert & Dominique | JW Churchyard
- Ferster, Bill & Murphy, Dan | Old School (outside)
- Foster, Jackson | JW Churchyard
- Kara, John | Bond Street Barn Area
- Willie, Adam & Montgomery, Aileen | Old School (outside)

## DEMONSTRATING ARTISANS BY LOCATION

### ● Bond Street Barn Area

- 👉 Bognar, Carole & Tom
- 👉 Darr, Richard
- 👉 Giles, Harriet
- 👉 Hollenbaugh, Kelly & Gary
- 👉 Kara, John
- 👉 Kirk, Roger
- 👉 Lanham, Jared
- 👉 Lavorgne, Maureen
- 👉 Lindamood, Lodema "Beth"
- 👉 Proctor, Jeanne
- 👉 Stanik, Alex
- 👉 Stanik, Ruth & Mike
- 👉 Supraner, Vicki & Scott

### ● John Wesley Church (lower level)

- 👉 Durnell, Andrea
- 👉 Kennedy, Selinda
- 👉 Spangler, Donna

### ● John Wesley Churchyard

- 👉 Cantilo, Icka
- 👉 Dewitt, Robert Dominique
- 👉 Foster, Jackson
- 👉 Savely, Clay
- 👉 Wolf, Susan
- 👉 Wychock, Karen

### ● Next to Old Mill

- 👉 Niskala, Nurit

### ● Old School Inside

- 👉 Aylward, Michael
- 👉 Banker, Ellen
- 👉 Eugene, Rosa & Winton
- 👉 Grabman, Marie-Helene
- 👉 Helberg, Kristin
- 👉 Hollick, Michele
- 👉 Jeffords, Barbara
- 👉 Kauffman, Justin
- 👉 Kriebel, Donna
- 👉 Linthicum, Lori
- 👉 Mihills, Cheryl
- 👉 Mills, Maureen & Zoldak, Steven
- 👉 Oliver, Amy
- 👉 = Children's activities

### ● Old School Inside

- 👉 Ratcliffe, Kathie
- 👉 Shriver, Alison
- 👉 Stribling, Candace

### ● Old School Porch

- 👉 O'Donal, Elaine
- 👉 Waterford Quilters Guild

### ● Old School Outside

- 👉 Alexander, Drew, Shea & Josiah
- 👉 Botchlet, Heather
- 👉 Carson, Joe
- 👉 Dansereau, Mallory
- 👉 De May, Robert
- 👉 Ferster, Bill & Murphy, Dan
- 👉 Gladfelter, Kimberly & Robert
- 👉 Hall, Marian
- 👉 Hart, Ian
- 👉 Hazelton, Carolyn
- 👉 Hicks, Connie
- 👉 Jobe, Jeffrey
- 👉 Kessler, Jonathan
- 👉 McKellar, Judith
- 👉 Miller, Shelley
- 👉 Piazza, Anne
- 👉 Pittman, Ben
- 👉 Pittman, Jessica
- 👉 The Ray Family
- 👉 Robinson, Gary
- 👉 Rochford, Grace
- 👉 Smith, Andy
- 👉 Steinhagen, Erich & Janice
- 👉 Van Hart, Linda
- 👉 Willie, Adam & Montgomery, Aileen
- 👉 Withnell, Susan
- 👉 Witmer, Amy & Joseph
- 👉 Yang, Mary ZC

### ● Villiage Center

- 👉 Anderson, Maureen
- 👉 Armistead, Jeff
- 👉 Dabbs, Laurel

*Made by Hand.*

This page donated in *Honor of Residents & Volunteers*



Fair Areas:



- Main Stage
- First Aid
- ATM
- Restrooms
- Food & Drink
- Encampment
- Wine & Beer
- Easy Walking Route
- Ticket Gate
- WCS Tent Talks

- ### PARKING
- Schooley Mill (Green)  
*Second Street*
  - Phillips Farm (Yellow)  
*Old Wheatland Rd*
  - Water Street Meadow (Red)  
*Loyalty Road*
  - Waterford Elementary *Bus parking only & entrance to Red Lot*
  - Shuttle: 10am- 5:00pm  
*Mobility-impaired only*
  - Welcome Tent/Information
  - Mobility Impaired & Bus Drop-off  
*Catoctin Presbyterian Church*

*80<sup>th</sup>*  
**Waterford**  
*Fair*

# ENTERTAINMENT

*at the Main Stage*

## Friday

Old Dominion Chorus, 11am  
 Danny Knicely & Chao Tian, 1 & 2pm  
 Ashlee Watkins & Andrew Small, 3pm



## Saturday

Celtic Rhythm School of Dance, 12pm

Down Valley Ramblers, 1pm

Fiddlin' Dave Van Deventer & Morgan Morris, 2:30 & 3:30pm



## Sunday

Dance Academy of Loudoun, 12pm  
 The Plate Scrapers, 1:15 & 2:15pm



Snap this QR code with your cell phone and open the full schedule!



## TALBOTT'S TAVERN *on the Lawn* ●



8 Chains North Winery  
 Carriage House Wineworks  
 Domaine Fortier Vineyards  
 Endhardt Vineyards  
 Two Twisted Posts Winery  
 Willowcroft Farm Vineyards  
 Wheatland Spring Farm + Brewery

## ENTERTAINMENT *throughout the Village*

### Friday

- Slim Harrison, Children's Jug Band
- Working Horses Harness Demonstration
- Terry Bender, Organ Grinder
- Madame du Vent Chaut & Tribou
- Old World Clowns
- Dominion Four, Barber Shop Quartet

### Saturday

- Slim Harrison, Children's Jug Band
- John McLaughlin, 18 c. Illusionist (shows: 11:30 am, 1:30 pm, 3:30 pm)
- Terry Bender, Organ Grinder

### Sunday

- John McLaughlin, 18 c. Illusionist (1 pm, 3 pm)
- Wreath Laying at the Cemetery (12:30 pm)

### All Three Days

- Robert Moulard, Musick of Early America
- Donna Nomick, Hammered Dulcimer
- John DuRant & John DuRant Jr., Old World Troubadours

 *Strolling throughout the village*

## FAIRE FOOD *and Libations*

### Fine & Faire Food

- BomBurger\*, smashburgers, sandwiches & fries | Old School Area
- Colonial Kettle Corn\*, sweet popcorn | Village Center
- Good Day Crepe\*, sweet & savory crepes | Old School Area
- Lisa's Lemonade & More\*, sweets & treats | Bond Street Barn Area
- Luke & Son For Global Food\*, freshly pkg. salads & dips | Bond Street Barn Area
- Sara Festivals\*, American & Greek | Old School Area
- Shrimp Shack\*, seafood | Old School Area
- The Big Cheese\*, grilled cheese sandwiches | Old School Area
- Troop 969\*, American | Old Mill Area
- Waterford Elementary PTO\*, American, sweets & coffee | Old School Area

### Heritage Foods & Farm Market

- Branch and Vine, fresh bouquets & fall garden décor | Old School Area
- Butler Hill Maple Farm, maple candies, nuts & syrup | Old Mill Area
- Catoctin Presbyterian Church, apple butter | Old School Area
- Frothy Mug, coffee, ice cream & sweets | Old School Area
- Lexi Berlin, gluten free & keto baked goods | Old School Area
- Loose Leaf Tea Company, loose leaf teas | Old School Area
- Murrell's Salsa, salsas & sauces | Old School Area
- Sweet Harmony Farm, lavender bundles, soaps & more | Old School Area
- The Southern Beekeeper, confectionary and beauty items | Old School Area
- Vale of the Blue Ridge Maple Farm, maple syrup | Old School Area
- Yummyworks, artisan chocolates | Old School Area

\* Greenfaire merchants use compostable products.

● *Beer and wine by the glass at Mills End Waystation* 



# ENGAGE *with history*

## TENT TALKS

### *the Waterford Craft School Tent\**

#### Friday

**12:30pm | Sue Manch,**  
*President, Waterford Foundation*  
A Brief History of Waterford

#### 1:30pm

**John Branding,**  
*Founder & Brewer, Wheatland Spring*  
Intention, Ingredients, Methods: Making Beer From Here

#### Saturday

**11am | Todd Post,**  
*Local Historian*  
Road to Revolution: Virginia's path from resistance to rebellion & the 250th anniversary of the American Revolution

#### 12:30pm

**Mallory Dansereau,**  
*Head Seamstress, Sycamore Spring Clothier*  
What Women Wore: An Introduction to 18th c. Clothing



#### Sunday

**11:30am**  
**Rebecca Suerdieck,**  
*Historian & Perfumer*  
Common Scents: A Fragrant History of Virginia Perfume

**12:30pm | Lori Kimball,**  
*Senior Manager of Programs, Oatlands*  
William Jordan Augustus, George Carter of Oatlands & the sneers of the Quakers

\*Limited seating.

Craft School Tent is on the lawn between the Old School and the Main Stage. ●

## Living History and Exhibits

- Liberty Rifles as the 45th Pennsylvania Camp | Bond Street Barn Area (Saturday only)
- Glenn McIntyre, Gunsmith | Gun Shop (village center)
- Jeff Ball, Earthly Host | Cemetery (behind old school)
- Eugene Scheel, Mapmaker | Map Shop (village center)
- Waterford's Remarkable Quaker Women | John Wesley Church (lower level)
- Hessian Regiment Von Huyn | Old School Lawn
- African American Experience of Waterford | Bond Street Barn Area (along Liggett Street)
- Celebration of Past Fairs | Welcome Tent (village center)
- Waterford Then and Now Photographs | Throughout the Village
- Explore an 1880s Classroom | Second Street School (15611 Second Street)
- 250 Exhibit: Loudoun & the American Revolution | Old School (auditorium lobby)
- Rebecca Suerdieck, Historian & Perfumer | Old School (porch)
- Chesapeake Region Lace Guild | John Wesley Church (lower level)

# WATCH. TRY. LEARN.



Activities abound for kids of all ages! Look for the "hand" symbol on the artisan listings for artisans with special activities for kids. See the entertainment schedule for times and locations of the activities listed below.



## GREAT ACTIVITIES FOR KIDS!

- Take in a Magic Show
- Enjoy the Organ Grinder's Music
- Play with Old World Clowns
- Dance to the Music at the Main Stage
- Play "King of the Hay Bale Mountain"
- March with the Hessians
- Learn about Lace Making
- Meet a Working Team of Horses
- Hear Cool Stories at the Cemetery
- Play in a Jug Band
- Explore Arts & Crafts with Artisans
- Take in a Dance Demonstration
- Learn how to Carve a Decoy
- Complete the Scavenger Hunt Passport
- Talk to a Painter
- Learn about a Revolutionary War Camp
- Sing Silly Songs with the Troubadours
- Learn How Honey is Made
- Visit a One Room Schoolhouse



# THE OLD MILL

Where it all began...

Featuring three floors of quality handmade crafts representing over 65 local and regional artisans including:

- Baked Goods
- Pottery
- Baskets
- Woodenwares
- Quilts & Rugs
- Household Items
- Americana
- Waterford-themed Goods
- Candles
- Books
- Jewelry
- Fashion & Accessories
- Dolls
- Children's toys
- Gifts for Everyone
- Soaps

**& Much More!**

Built in the 1820's, the Old Mill supported Waterford area's agrarian economy as a grist mill until operations ceased in 1939.

The existing brick mill replaced earlier wooden sawmill & gristmill buildings that produced lumber and flour during the 18th & 19th centuries.

The historic building was recently restored by Carpenter Beach Construction with funding from Loudoun County. ●



## ART MART & FINE ART at the Red Barn ●

An enormous collection of local works representing a variety of media is available for purchase at the ArtMart (lower level). The Fine Art Exhibit is the site for judged exhibition and sale of contemporary art of all media including sculpture and paintings (upper level).



## DRIED FLOWERS at the Bond Street Barn ●

Local gardeners and foragers work with grown & found flowers and greens, creating lovely seasonal wreaths and centerpieces. Find the perfect piece for your home.



**2024-2025 SEASON**



**September 22, 2024**  
Cheng<sup>2</sup> Duo  
Sylvie and Bryan Cheng  
Piano and cello

**October 13, 2024**  
Academy of St. Martin  
in the Fields String Octet  
Shostakovich, Schulhoff,  
Mendelssohn

**November 10, 2024**  
Paul Lewis, piano  
Schubert last sonatas

**March 16, 2025**  
Cafritz Young Artists of the  
Washington National Opera  
Program to be announced

**April 27, 2025**  
Escher String Quartet  
Mozart, Mendelssohn, Dvorak

Concerts begin at 4:00 pm in the Waterford Old School  
Tickets and information at [waterfordconcertseries.org](http://waterfordconcertseries.org)



## Celebrate this year's harvest on the farm

Loudoun  
Fall  
Farm  
Tour

**OCT 19 & 20, 2024**  
10 a.m. to 4 p.m.

Visit [LoudounFarmTour.com](http://LoudounFarmTour.com)  
for more details







**Lovettsville Cooperative Market**  
**The Co-op**  
 Locally Grown, Community-Owned  
 Open 9 to 8 Daily - ALL ARE WELCOME!

**A New Co-op Market in Lovettsville!**

- Full-Service Grocery
- Deli with Ready-to-Eat Foods
- Focused on Local Products
- Fresh Produce
- Great Beer & Wine Selection

**\$5 OFF ANY PURCHASE OF \$20 OR MORE WITH THIS COUPON**  
coupon expires 10/31/24

11 Town Center Drive, Suite 150, Lovettsville, Virginia 20180 540-579-8070  
 info@lovettsvillemarket.coop www.lovettsvillemarket.coop

**Budding Equestrians LLC**

**Horse Boarding & Riding Lessons for All**

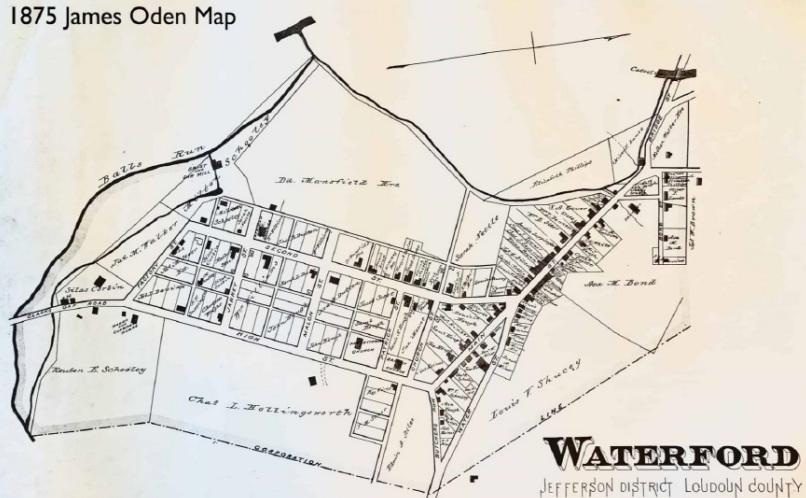
40196 Leila Lane, Waterford, Virginia

[www.buddingequestriansllc.com](http://www.buddingequestriansllc.com)

buddingequestriansllc@gmail.com 301-366-2171



1875 James Oden Map



**WATERFORD**  
 JEFFERSON DISTRICT LOUDOUN COUNTY

Reproduction (1965, Melvin Lee Steadman, Jr.) of 1875 James Oden Map showing Waterford (Waterford Foundation).

**EHT TRACERIES**  
 HISTORIC PRESERVATION

**Tuskie's Hospitality Group**










*The Best Fare for the Best Fair*

A CULTURE OF CARING  
SINCE 1849



LOUDOUN MUTUAL



VIRGINIA'S PROPERTY  
INSURANCE SPECIALISTS  
HOMES • FARMS • ESTATES • RENTALS • COMMERCIAL

Visit [www.LoudounMutual.com](http://www.LoudounMutual.com)  
to find an agent near you.



# THANK YOU! *to our Sponsors*

## LANDMARK SPONSORS



Waterford  
FOUNDATION, INC.

*Wegmans*



*Visit*  
LOUDOUN  
- DC's Wine Country\* -

VIRGINIA  
IS FOR  
LOVERS®

## TOURS SPONSORS

EHT Traceries

## STAGE SPONSORS

Tuskies Restaurant Group

## ARTISAN SPONSOR

Sorba Engineering

## COMMUNITY PARTNERS

Jennifer Jules Studio

## VENUE SPONSORS

Foundation Direct

Insignis

Loudoun Economic Development

Lovettsville Co-op

Waterford Craft School

Wheatland Spring Farm + Brewery

Loudoun Milling

Road Yachts

Royal Carts

Turner Tree Works

William A. Hazel, Inc.

## You can help preserve history...

The mission of the Waterford Foundation is to preserve the historic buildings and the open spaces of the National Historic Landmark of Waterford, Virginia, and through education to increase the public's knowledge of life and work in an early American rural community.

Become a member of the Waterford Foundation for as little as \$50 per year.



Snap to become a member.



# SAVE THE DATES!

## WATERFORD CRAFT SCHOOL

Find classes in painting with fiber, basketry, stained glass, floorcloth making, and more!

[craftschool.waterfordfoundation.org](http://craftschool.waterfordfoundation.org)



## HISTORIC WATERFORD TRAIL RUN

Mark your calendar for the 9th Annual Historic Waterford Trail Run on May 10, 2025.

See [waterfordfoundation.org](http://waterfordfoundation.org) for registration information early in 2025.



We look forward to seeing you at the  
**2025 Waterford Fair**

**October 3 – 5, 2025**



Thank you to all our volunteers, patrons, & supporters who helped make Fair magic this year!

PO Box 142, Waterford, VA 20197  
[oldschool@waterfordfoundation.org](mailto:oldschool@waterfordfoundation.org)  
(540) 882-3018 [waterfordfoundation.org](http://waterfordfoundation.org)